

LOCATION

STONER HOUSE, STANSTED MOUNTFITCHET, ESSEX

CLIENT

INWOOD PROPERTIES LTD

CONSTRUCTION

£800,000

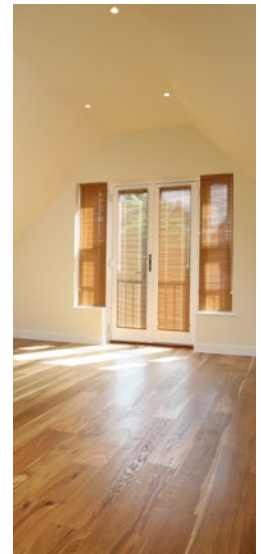
ARCHITECT

BARRETT HASKINS DESIGNS



FACT FILE

Kaymac demolished the existing building to construct 6 flats and an underground car park for Inwood Properties Ltd. The rear of the site was retained by a contiguous piled wall with sheet piling retaining the sides of the site. Access was very restricted and the use of a crane essential. Over 50 no. piles help to support a timber frame building, along with approx. 15T of reinforcement in RC walls and slabs along with approx. 12T of structural steelwork.



FEATURE

COMMENT

Brickwork	Ibstock Parham Red Stock – Flemish Bond
Render	Monocouche scraped finish self-Coloured render
Roof	Blue Grey smooth Spanish Slate
Kitchens	High gloss white furniture with black granite worktops
Tiling	50 x 50mm White mosaic to bathroom walls and Arena Quartz to floors on under floor heating
Wardrobes	Portico steel frame with oak finish
Flooring	Natural Oak Veneered oiled board to Living and Hallways, carpets to bedrooms and communal areas