

## LOCATION

OYSTER WHARF, LOMBARD ROAD, LONDON SW11

## CLIENT

SOUTHERN DEVELOPMENTS LTD

## CONSTRUCTION

£2 MILLION

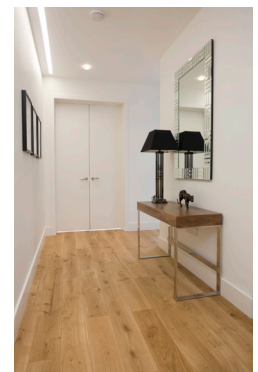
## ARCHITECT

GROVES NATCHEVA ARCHITECTS



## FACT FILE

Kaymac negotiated a scheme with the client to fit-out 14 no. high specification residential apartments overlooking the Thames at Battersea. There are 7 apartments on both the first and second floors with a lift providing access to the Ground Floor Lobby and to a Basement Car Park.



## FEATURE

## COMMENT

Bathroom Floors & Vanity Tops	Carrarra Bianca Marble
Kitchen Flooring	Kashmir White Granite
Entrance Lobby & Staircase	European Oak panelling
Wood Flooring	Engineered oiled Oak board
Kitchens	Antique white furniture, granite worktops and glass splashbacks
Wardrobes	White lacquered robes, shelves C/W chrome furniture
Heating/Cooling	Comfort cooling and heating by Variable Refrigerant flow system with fan coils located as floor mounted units or within ceiling voids
Lighting	Recessed down lighters, fluorescents and track lighting