

LOCATION

TULSE HILL, LONDON SW2

CLIENT

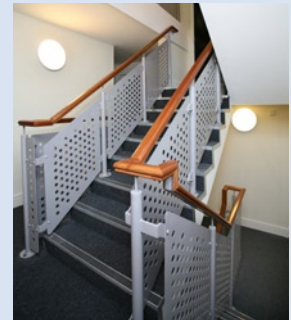
TULSE HILL PROPERTY CO. LTD

CONSTRUCTION VALUE OF SCHEME

£1.65 MILLION

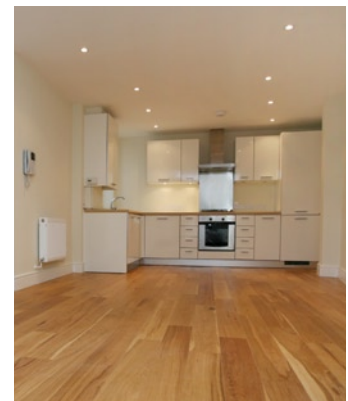
ARCHITECT

MOXLEY ARCHITECTS



FACT FILE

Kaymac successfully tendered and were appointed to undertake the construction of 14 flats with 3 no. retail units. The construction consisted of brick and block cavity walls, precast concrete first floor and timber second floor with cut timber tile clad pitched roofs. Extensive drainage and external works were carried out. The project was completed on time and within budget.



FEATURE

COMMENT

Entry System	Individual access control for door entry
Courtyard Access	Individual access electronically controlled metal vehicle and pedestrian gates
Timber Flooring	Oak engineer board oil finish
Heating	Keston Duet A Rated Gas Condenser boilers with integrated hot water cylinders
Telecoms/Media	Combined TV/FM/Audio Satellite Services
Timber Feature Stairs	Exposed timber feature stairs to maisonettes including handrails and balustrades
External Cladding	Finnforest Thermowood Cladding and soffits
Balcony	Individual designed metal balcony
Walkway	Glass clad access balcony to first floor maisonettes and staircases
External Windows & Doors	Tailored timber high performance timber sash windows and door sets from Arden Windows