

LOCATION

LYFORD ROAD, WANDSWORTH, LONDON SW18

CLIENT

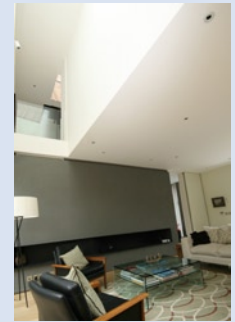
LYFORD INVESTMENTS LTD

CONSTRUCTION VALUE OF SCHEME

£2 MILLION

ARCHITECT

ALISON BROOKS ARCHITECTS LTD



FACT FILE

Kaymac tendered and were successful in being appointed to construct two luxury houses to the rear of a bowling green in Wandsworth, London. The construction of the houses was regarded as a high quality development, which attracted media coverage. An external envelope and roof covered a steel frame, structural floors which also included a basement structure in both houses. Extensive drainage and external works also formed part of the project.



FEATURE

COMMENT

Cladding	IPE hardwood timber weatherboarding in walls, Herringbone pattern 25° to vertical
Flashing & Copings	Meridian Aluminium coping system and aluminium flashings
Roofs	Warm roofs comprising Sarnafill System on 75mm structural topping
Flooring	Hardwood Oak flooring and underfloor heating
Windows & Rooflights	Bronze anodised, polyester powder coated aluminium sliding, fixed, casements and rooflights
Internal Doors	Neuform Doors element system S Pocket Doors by Fastrac and ironmongery by Dorma
Rendering	Proprietary render system by Wetherby
Tiling	Terra Macstrict and Notturmi
External	Resin bonded gravel to access road and driveways
Fencing & Gates	Open mesh steel panels to car ports – Meshtec and Ambasciata including gate automation system.
Sanitaryware	Duravit and Kaldewei
Services	Comfort Cooling, Ventilation System, Underfloor Heating, Lighting, Power, Fire Alarms